

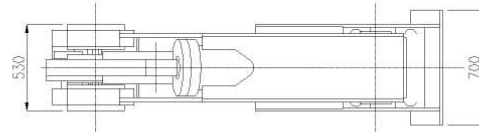
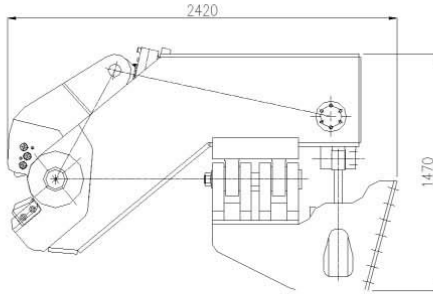
**MOBILE FRAG**

**Rail Cropper  
RC 240**



### **Benefits for the customers**

- Specially designed for cutting rails of railways
- Mobile equipment : cost savings in rail rehandling and transport
- Only one operator for the full process of cutting rail
- Safety environment ; no more injuries
- Workable in all weather conditions (from -20°C to +50°C)
- No specific ground required
- Cold cutting enables to not change steel composition
- Compared to oxy-cutting, the cold cutting avoids losing 2% of metal
- Improve the return on investment of your excavator
- Optimization of your excavator
- Easy to be fitted on all excavators
- Get a better value of your production
- Very high productivity compared to oxy-cutting



**Total weight** 2 050 kg

**Overall length** 2 100 mm

**Oil flow and working pressure requirements**

Main cylinder 320 bars  
Rotating cylinders 30 l / min, 60 bars

**Maximum hydraulic pressure** 350 bars

**Maximum cutting force** 300 tonnes @ 320 bars

**Cuts per minute** 13 @ 428 l / min

**Length of end products** From 100 mm and above

**Boom fitted excavator** From 15 tonnes

**Dipper end fitted excavator** From 20 tonnes

**Fits on excavator with a connecting plate with or without quick coupler**

Patent number EU 1392463, UK2378914, USA 6,892,918 B2 & patents pending  
Manufactured by Mobile Frag Sales Ltd – England

RAIL CROPPER DATA – All dimensions are approximate and data are indicative.  
The Manufacturer reserves the right to alter specification without notice.