

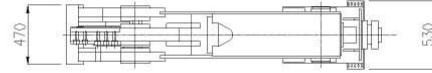
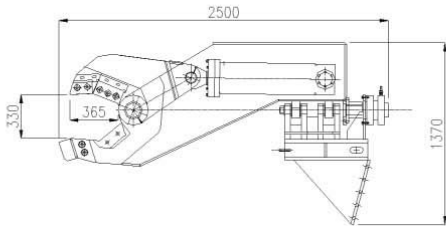
**MOBILE FRAG**

**Demolition & Scrap Shear  
SDS 300**



**Benefits for the customers**

- Multi tasks tool for demolition and scrap works
- specially designed for cutting ferrous and non ferrous scrap
- Mobile equipment: cost savings in scrap rehandling and transport
- Only one operator for the full scrap processing : pulls it down, cuts it up and load it
- Very high productivity compared to oxy-cutting
- Improve the return on investment of your excavator
- Optimization of your excavator
- Safety environment: no more injuries
- Works in all weather conditions (from -20°C to +50°C)
- Works in toxic conditions, works overhead and below water
- No specific ground required
- Easy to be fitted on all excavators



**Total weight** 2 000 kg

**Overall length** 2 500 mm

**Jaw opening** 330 mm

**Jaw depth** 365 mm

**Oil flow and working pressure requirements**

Main cylinder 320 bars

Rotating cylinders 30 l / min, 60 bars

**Maximum hydraulic pressure** 350 bars

**Maximum cutting force** 300 tonnes @ 320 bars



70 mm



300x150 mm



300x10 mm

**Cuts per minute** 13 @ 428 l / min

**Available with 180° rotating system or without rotating system**

**Full ram guard available on request**

**Boom fitted excavator** From 15 tonnes

**Dipper end fitted excavator** From 20 tonnes

**Fits on excavator with a connecting plate with or without quick coupler**

Manufactured by Mobile Frag Sales Ltd - England

RAIL CROPPER DATA - All dimensions are approximate and data are indicative. The Manufacturer reserves the right to alter specification without notice.